



TUCSON'S BOLD, INVITING, AND
DISTINCTIVE CULTURE INSPIRES
CREATIVITY, IGNITES DISCOVERY,
AND FOSTERS ENDURING
ECONOMIC VITALITY.



A modern urban center meets a stunning natural landscape. A growing metropolis with a deep connection to its history, culture, and sense of place.

Tucson is a community where young people have access to world renowned higher education and an affordable cost of living. Where innovators have the freedom and support to dream big, and organizations find the talent, infrastructure, and resources to flourish.

This is a culture, a lifestyle, and a charm that you'll find only in Tucson.



"I PLAN TO STAY HERE FOR A WHILE—MY CAREER IS GROWING, AND WITH THE MILD WINTERS, CONSTANT SUNSHINE, ACCESS TO THE OUTDOORS AND THE LOCAL CULTURE, TUCSON CHECKS ALL THE BOXES FOR ME."

- KRISTEN FULMER,
THERMAL ANALYSIS AND TEST
ENGINEER AT RAYTHEON MISSILE
DEFENSE (29)



#4 CITIES

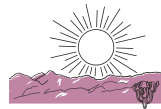
WITH LOWEST COST
OF LIVING

- [MOVE.ORG](https://www.move.org)



66 MILES FROM

THE INTERNATIONAL
BORDER WITH MEXICO



286 DAYS

OF SUNSHINE A YEAR

- [BESTPLACES.NET](https://www.bestplaces.net)





#5 BEST

CITIES FOR
REMOTE WORKERS

- *FORBES*



FIRST UNESCO

CITY OF GASTRONOMY
IN THE US

- *UNESCO*



THRILLIST'S 2020

LIST OF "GREAT AMERICAN
CITIES FOR CREATIVES"

- *THRILLIST*



HUNDREDS

OF MILES OF
HIKING TRAILS

ONLY IN TUCSON

**AEROSPACE
& DEFENSE**

**BIOSCIENCE
& HEALTHCARE**



KEY IND

“What we love about Tucson is the collaborative nature. It feels like we’re all in this together and helping each other, and that’s been so amazing for us as a startup as we grow.”

-JULIE BONNER, Director of Communications at FreeFall Aerospace

A white semi-truck is shown from a low angle, with the sun setting in the background, creating a warm orange and yellow glow. The truck's trailer is the central focus, with vertical rivets visible.

**TRANSPORTATION,
LOGISTICS &
MANUFACTURING**

A large satellite dish antenna is shown from a low angle, with the sun setting in the background, creating a warm orange and yellow glow. The dish is composed of many smaller, circular panels arranged in a grid pattern.

**OPTICS
& PHOTONICS**

INDUSTRIES

“We have so many great community partnerships, and the universities with best-in-class talent, and a great regulatory environment. It’s all allowed for incredible growth.”

-ROBERT BROWN, Sr. Director of External Affairs at TuSimple



CONNECT TUCSON

CITY OF TUCSON
OFFICE OF ECONOMIC INITIATIVES

Explore more at ConnectTucson.com

E: ConnectTucson@tucsonaz.gov

P: (520) 837-4100